

Model	dB	AMP	vdc	SAE J994
STANDARD				
66-087	87	.3	10-32	X
66-097	97	.3	10-32	X
66-097-12	97	.3	12	X
66-102	102	.3	10-32	
66-107	107	.4	10-32	X
DUAL TONE				
66-097DT	97	.3	10-32	
66-102DT	102	.3	10-32	
AUTO-ADJUST				
66-707A	77-97	.4	10-32	
66-802A	82-102	.4	10-32	X
66-807A	87-107	.4	10-32	X
STAR SPECTRUM				
66-087SS	87	.3	10-32	
66-092SS	92	.3	10-32	
66-097SS	97	.3	10-32	X

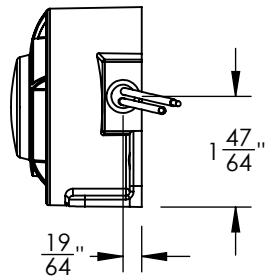
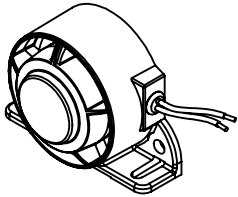
Model	dB	AMP	vdc	SAE J994
STANDARD				
66L-087	87	.3	10-32	X
66L-097	97	.3	10-32	X
66L-097-12	97	.3	12	X
66L-102	102	.3	10-32	
66L-107	107	.4	10-32	X
DUAL TONE				
66L-097DT	97	.3	10-32	
66L-102DT	102	.7	12	
AUTO-ADJUST				
66L-707A	77-97	.4	10-32	
66L-802A	82-102	.4	10-32	X
66L-807A	87-107	.4	10-32	X
STAR SPECTRUM				
66L-097SS	97	.3	10-32	X

CHANGES PENDING
JH 7/6/2023
ECR 19004

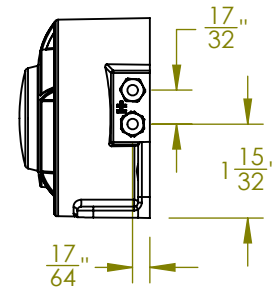
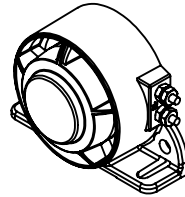
REV.	ECR	DESCRIPTION	DATE
-	9850	INITIAL DRAWING REQUEST	8/1/11
B	14041	REMOVED 66-107-12, 66-107-24, 66L-107-12, 66L-107-24 AND 66-107DF-24-6. ADDED 66-107, 66L-107. UPDATED VOLTAGE AND CURRENT	3/9/2017
C	14498	REMOVED MODEL 66L-107-12, vdc FOR 66802S 10-32 WAS 12-36, vdc FOR 66-097DF 10-32 WAS 12-36, ADDED AGENCY APP. 66-807A & 66L-807A	7/13/17
D	15130	UPDATED MODEL CHARTS FOR VOLTAGES AND SAE	4/3/2018
E	16646	66-907S VOLTAGE IS NOW 10-32	6/4/2019
F	16993	REMOVED 66-087NS, 66-087SSNS, 66-097NS 66-097SSNS, 66-102NS FROM TABLE	12/19/2019

REMOVED 66-097DF, 66-097DT, 66-107, AND 66-807A

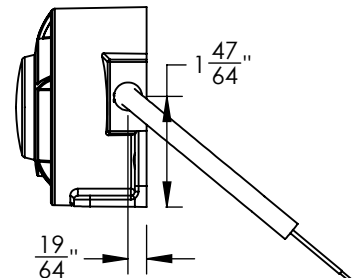
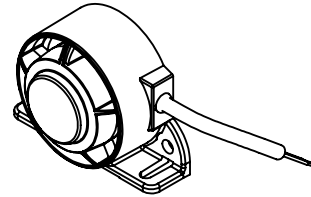
**66-* SERIES
w/ 9" WIRES**



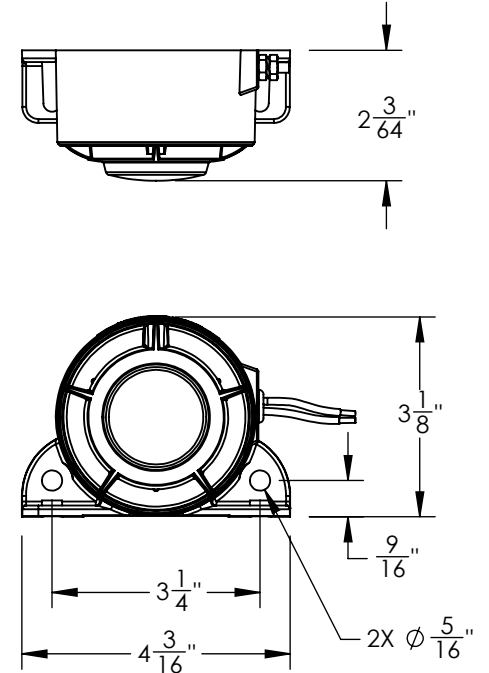
**66L-* SERIES
w/LUGS**



**66-* SERIES
w/ 12" CABLE**



Model	dB	AMP	vdc
SELECTABLE			
66-802S	87 or 102	.3	10-32
66-907S	97 or 102	.7	10-32
DUAL FUNCTION			
66-097DF	97	.3	10-32



- ALL REMAINING MEET THE ACOUSTICAL REQUIREMENTS OF SAE J994
- TEMPERATURE RANGE: -40 TO +85C
- dB TOLERANCE: ± 4 dB



UNLESS OTHERWISE SPECIFIED

DIMENSIONS ARE IN INCHES

TOLERANCES:

ANGULAR: ± 2 DEG.

.X ± .100
.XX ± .020
.XXX ± .005
.XXXX ± .001

RoHS COMPLIANT: NO

MATERIAL:

N/A

FINISH:

N/A

DRAWN BY: SWN

DRAWING APPROVED BY ECR

THE INFORMATION CONTAINED IN THIS DRAWING IS THE SOLE PROPERTY OF STAR HEADLIGHT & LANTERN CO., INC.. ANY REPRODUCTION IN PART OR AS A WHOLE WITHOUT THE WRITTEN PERMISSION OF STAR HEADLIGHT & LANTERN CO., INC. IS STRICTLY PROHIBITED.

STAR HEADLIGHT & LANTERN CO., INC.

455 Rochester St. Avon NY 14414
Ph:(585) 226-9500 Fax: (585) 226-2029

MODEL: 66 SERIES

TITLE:
MODEL DRAWING

DWG. NO.

66 SERIES

REV

F

SCALE: 1:2

DO NOT SCALE FROM DRAWING

SHEET 1 OF 1