



# DLITMC Series

Low Profile Multi-Color LED Auxiliary Light

**IMPORTANT:** Please read all of the following instructions before installing your new light. Failure to follow these safety precautions may result in damage to your light or vehicle and may result in serious injury or death to you and your passengers.

## Installation Notes

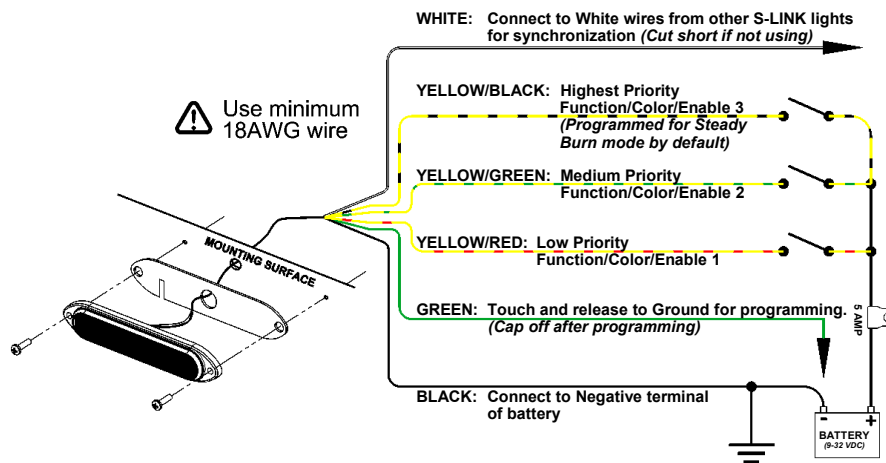
- Installer must have firm knowledge of vehicle electrical systems & emergency equipment. **It is the sole responsibility of the installer to ensure the warning light is secure. The manufacturer assumes no responsibility for the secure mounting of this light.**
- If you need to drill any holes when installing this light, please take care to check that BOTH SIDES of your drilling surface are clear from obstructions.
- Choose a mounting location away from any air bag deployment areas.
- Controls should be placed within convenient reach of the driver.
- Use only soap and water when cleaning product. Use of other chemicals may discolor lens and/or housing, diminishing light output.

## Wiring Notes

**!** When wiring your lights, it is recommended that you take the following precautions to reduce any Electromagnetic Interference (EMI).

- Keep LED modules and any radios as far away from each other as possible.
- Separate the radio wires and the LED wires.
- Any excess wires should be cut short.
- The Ground wire, Power wire, and Synchronization wire should be bound tightly together as they run from light to light, through your switchbox, and to the battery.
- **Do not ground each unit independently to the chassis.** Run the ground for each unit in a "bus" like structure, to the negative terminal on the battery.

**Note:** The total wire length between the two farthest units should be no more than 40 feet.



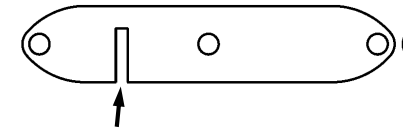
PLIT582 REV. C 11/15/21

## Surface Mounting Instructions

Several mounting brackets are available for various applications where mounting directly to the surface is not desired. Please visit our website ([www.starheadlight.com](http://www.starheadlight.com)) for a complete list of brackets.

For surface mounting, use the gasket as a template to mark and drill three holes for the self tapping screws and wires.

Rubber Mounting Gasket P30047-174



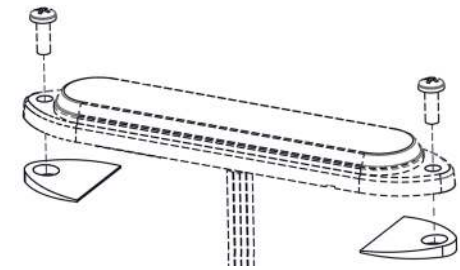
**!** MUST DRILL HOLES THE SPECIFIED SIZES!!!

**!** DO NOT OVER TIGHTEN SCREWS!! TORQUE TO 10 IN.-LBS.!!

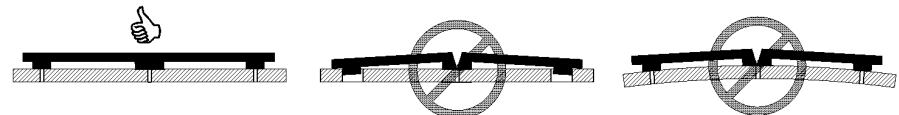
**!** MUST USE #6 STAINLESS STEEL SCREWS!!

Remove the one gasket slit that is open to the bottom. This will allow air to circulate through the Gortex™ pad on the rear of the light, helping reduce condensation.

If you are installing this light on a curved surface, it is recommended that you purchase the #30019-314 Shim Kit and install the shims as pictured to the right.



**Unless you are using the optional shims, this light must be mounted on a perfectly flat surface!! Failure to do so will result in damage to the housing and will void the warranty!!**



Once the wires are run, the use of a small amount of silicone or other similar sealant (not included) is recommended to seal the wire hole and prevent your wires from becoming damaged.



## Standard Programming, Functionality, and Operation

For ease of programming, we recommend using the Android app (see page 7 for details). If you do not have access to an Android device or prefer to program the light manually, proceed below.

This section applies to the default functionality of this light. There are also several other advanced features that can be programmed. Most applications will not require reprogramming of the light, but you can find these options described in detail under the **Advanced Programming** section.

The recommended first step is to identify what color is defaulted to each input. To do this:

- Connect the BLACK wire to Ground
- Touch only one of the Enable wires to power and note which color is activated.
- Repeat for each Enable wire.

### Please Note The Following

- Enable 3 is programmed for steady burn mode by default. If you wish to set it for one of the flash patterns, please review the **Advanced Programming Section**.
- If you have a 2-color version, Enable 2 and Enable 3 will activate the same color.

### PATTERN SELECTION

1. Connect the BLACK wire to Ground
2. Connect the corresponding Enable wire to Power (only one at a time).
3. Touch and release the GREEN wire to Ground to scroll through the patterns.

Flash Pattern #	S-LINK Pattern Type	Pattern Description
1	K	Flicker † (Shortcut 1)
2	L	Fast Doubleflash
3	M	Tripleflash †
4	N	Pseudo Flicker
5	O	Pseudo Random
6	F	Quadflash †
7	G	Quadflash w/Post-Pop †
8	H	Singleflash †
9	I	Doubleflash †
10	J	Variable AKA Delta-Omega
11	A21	Double Shuffle ‡ (Shortcut 2)
12	A22	Quad/Single
13	A23	Single Cycle
14	A24	Quad Post Pop Shuffle ‡
15	A25	Quint Shuffle
16	A26	Combo 1 5 3 ‡
17	A27	Delta Omega Nu
18	A28	Cliff

† - SAE approved patterns when properly configured

‡ - SAE approved patterns when programmed for single color only

Shortcut 1 - Hold GREEN wire to Ground for 3 seconds (light flashes once)

Shortcut 2 - Hold GREEN wire to Ground for 6 seconds (light flashes twice)

### ACTIVATING MULTIPLE ENABLES

When more than one Enable line is activated at the same time, the following rules will apply:

- Enable 3 > Enable 2 > Enable 1
- If multiple Enables are activated and a the highest priority Enable is programmed for Steady Burn, then only that Steady Burn color will activate.
- If you activate multiple flashing Enable lines at the same time the pattern of the highest Enable wire (3 is highest) will take precedence and each activated flashing color will cycle though that pattern one at a time with an "Off" time between colors.
- Any Steady Burn Enable will be de-activated if a higher priority flashing Enable is activated.

FACTORY DEFAULT ENABLE WIRE LEGEND	
YELLOW w/BLACK	- Enable 3 : Color/Function 3
YELLOW w/GREEN	- Enable 2 : Color/Function 2
YELLOW w/RED	- Enable 1 : Color/Function 1

### ADDITIONAL FUNCTION PROGRAMMING

There are several additional functions that can be accessed through the "shortcuts" that are listed in the chart below.

To set any of them:

1. Connect the BLACK wire to Ground
2. Connect ONE of the Enable wires to Power
3. Hold the GREEN wire to Ground for the time indicated.

Each Enable wire is programmed independently.

#### Phase 1 / Phase 2 (Patterns 1-10 only)

By default, each Enable is set for Phase 1. If you are synchronizing this light with another and want the two lights to alternate, use the shortcut shown in the chart to the right to set the second light for Phase 2. (See *Synchronization* section for details)

#### Steady Burn

Set the corresponding Enable wire for this mode if you want that color to be Steady Burn.

#### Cruise

Low intensity version of Steady Burn.

#### Auto-Dim

If this feature is enabled the color/function tied to that particular Enable wire will automatically dim in low light environments (ex. at night).

ADDITIONAL FUNCTION PROGRAMMING SHORTCUTS		
Hold Green to Ground (sec)	# Flashes	Effect On That Enable Wire
0-2	N/A	Advances to next pattern
3	1	Advances to Pattern 1
6	2	Advances to Pattern 11
9	3	Set Enable to Phase 1
12	4	Set Enable to Phase 2
15	5	Toggles Cruise On/Off
18	6	Toggles Steady Burn On/Off
21	7	Toggle Auto-Dim On/Off

### SYNCHRONIZATION

You can synchronize up to ten lights with **S-LINK SYSTEM** compatibility.

**DO NOT CONNECT WHITE WIRES UNTIL PROGRAMMING HAS BEEN COMPLETED FOR ALL LIGHTS!!**

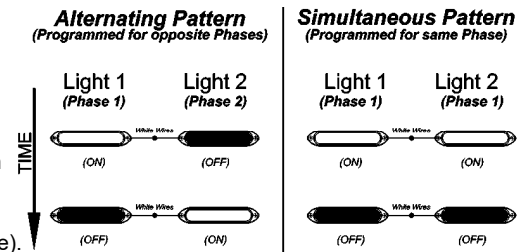
1. Power up the first unit and select a pattern. Touch and release the green wire to ground to change patterns.

2. Program the second light for the same **Pattern**.

3. If applicable, program the **Phase** of the second light.

Lights set for the SAME phase flash together (simultaneous).

Lights set for DIFFERENT phases flash opposite one another (alternate).



4. After programming all lights, tie off the green wires and connect the white wires together.

5. Test lights by applying power to all of them at the same time.

**RESET TO DEFAULT SETTINGS**

To reset all settings to the factory defaults, proceed as follows:

- Connect the BLACK wire to Ground
- Connect the WHITE wire and any **ONE** of the Enable wires to Power
- For 3-Color lights: Connect hold the GREEN wire to Ground for 9 seconds and release it when the light flashes 3 times.
- For 2-Color lights: Connect hold the GREEN wire to Ground for 12 seconds and release it when the light flashes 4 times
- Disconnect the WHITE wire from Power 1 second later

**LED FIVE YEAR LIMITED WARRANTY**

The manufacturer warrants this LED light against factory defects in material and workmanship for five years after the date of purchase. The owner will be responsible for returning to the Service Center any defective item(s) with the transportation costs prepaid. The manufacturer will, without charge, repair or replace at its option, products, or part(s), which its inspection determines to be defective. Repaired or replacement item(s) will be returned to the purchaser with transportation costs prepaid from the service point. A copy of the purchaser's receipt must be returned with the defective item(s) in order to qualify for the warranty coverage. Exclusions from this warranty include, but are not limited to, domes, and/or the finish. This warranty shall not apply to any light, which has been altered, such that in the manufacturer's judgment, the performance or reliability has been affected, or if any damage has resulted from abnormal use or service.

There are no warranties expressed or implied (including any warranty of merchantability or fitness), which extend this warranty period. **The loss of use of the product, loss of time, inconvenience, commercial loss or consequential damages, including costs of any labor, are not covered.** The manufacturer reserves the right to change the design of the product without assuming any obligation to modify any product previously manufactured.

This warranty gives you specific legal rights. You might also have additional rights that may vary from state to state. Some states do not allow limitations on how long an implied warranty lasts. Some states do not allow the exclusion or limitation of incidental or consequential damages. Therefore, the above limitation(s) or exclusion(s) may not apply to you.

If you have any questions concerning this or any other product, please contact our **Customer Service Department** at (585) 226-9787.

If a product must be returned for any reason, please contact our Customer Service Department to obtain a Returned Material Authorization number (RMA #) before you ship the product back. Please write the RMA # clearly on the package near the mailing label.

**NOTICE**

Due to continuous product improvements, we must reserve the right to change any specifications and information, contained in this manual at any time without notice. Star Headlight & Lantern Co., Inc. makes no warranty of any kind with regard to this manual, including, but not limited to, the implied warranties of merchantability and fitness for a particular purpose. Star Headlight & Lantern Co., Inc. shall not be liable for errors contained herein or for incidental or consequential damages in connection with the furnishing, performance, or use of this manual.



PROUDLY MADE IN THE USA  
An ISO 9001:2008 Certified Company

**Star Headlight & Lantern Co., Inc.**  
455 Rochester Street Avon, NY 14414 Phone: 585-226-9787 FAX: 888-478-2797

SINCE 1889 STAR WARNING SYSTEMS STARSIGNAL VEHICLE PRODUCTS BRADFORD Vehicle Solutions www.starheadlight.com

**Advanced Programming**



**This section is OPTIONAL. Most applications will not require any Advanced Programming. You should only need to reference this section if you require specialized programming.**

**CHANGING COLOR ASSIGNMENTS FOR EACH ENABLE**

*(applies only to Patterns 1-10, Steady Burn, and Cruise)*

When shipped, each Enable wire has one color assigned to it. The table below shows the default factory settings.

To reprogram the color assigned to each Enable, or to assign multiple colors to one Enable, proceed as follows:

- Connect the BLACK wire to Ground.
- Connect the WHITE wire and **only** the Enable wire that you wish to reprogram to Power.
- Briefly touch and release the GREEN wire to Ground to scroll through the color combinations listed in the table below.
- Disconnect the WHITE wire from Power after 1 second.

**For 2-color Models Only: Programming Color 3 will result in an OFF time in the pattern.**

Enable Wire Color Assignment			
Setting #	Color 3	Color 2	Color 1
1	ON	OFF	OFF
2	OFF	ON	OFF
3	ON	ON	OFF
4	OFF	OFF	ON
5	ON	OFF	ON
6	OFF	ON	ON
7	ON	ON	ON

**FACTORY DEFAULT ENABLE WIRES**

- ◀ **YELLOW w/BLACK - Enable 3**
- ◀ **YELLOW w/GREEN - Enable 2**
- ◀ **YELLOW w/RED - Enable 1**

## CHANGING COLOR ORDER FOR EACH ENABLE

*(applies only to Patterns 11-18 / 3-Phase Patterns)*

When programmed for Patterns 11-18, each Enable wire has a default "Color Order" assigned to it (the order the colors are rotated through). By default, each Enable Wire has only one color assigned to it.

Using this programming option you can change the order and/or replace individual colors from the 3-Phase pattern. This can be useful if you want to utilize only one or two colors for a particular Enable, or if you have two synchronized lights and you would like a different color flashing on different lights.

To reprogram the Color Order assigned to each Enable, proceed as follows:

- Connect the BLACK wire to Ground.
- Connect the WHITE wire and the Enable wire that you wish to reprogram to Power.
- Hold the GREEN wire to Ground to for 3 seconds until the light flashes once then release it. The Color Order will scroll to the next combination listed in the table to the below.
- Repeat the process with the GREEN wire until you advance to the combination you desire.
- Disconnect the WHITE wire from Power after 1 second.

***For 2-color Models Only:***  
Selecting a combination that uses color 3 will result in an "Off" time in the pattern.

Color Order For 3-Phase Patterns				DEFAULT ENABLE WIRE COLOR ORDERS FOR 3-PHASE PATTERNS
Setting #	Phase 1	Phase 2	Phase 3	
1	C1	C1	C1	◀ YELLOW w/RED - Enable 1
2	C2	C1	C1	
3	C3	C1	C1	
4	C1	C2	C1	
5	C2	C2	C1	
6	C3	C2	C1	
7	C1	C3	C1	
8	C2	C3	C1	
9	C3	C3	C1	
10	C1	C1	C2	
11	C2	C1	C2	
12	C3	C1	C2	
13	C1	C2	C2	◀ YELLOW w/GREEN - Enable 2
14	C2	C2	C2	
15	C3	C2	C2	
16	C1	C3	C2	
17	C2	C3	C2	
18	C3	C3	C2	
19	C1	C1	C3	
20	C2	C1	C3	
21	C3	C1	C3	
22	C1	C2	C3	
23	C2	C2	C3	
24	C3	C2	C3	
25	C1	C3	C3	◀ YELLOW w/BLACK - Enable 3
26	C2	C3	C3	
27	C3	C3	C3	

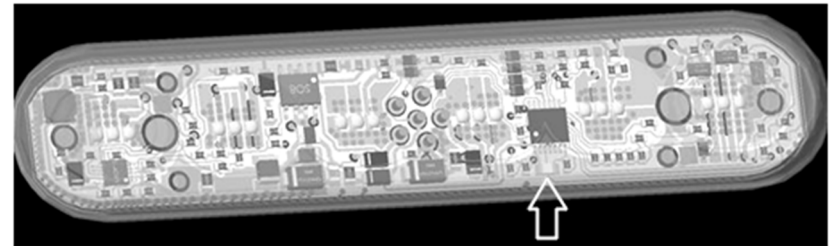
## WIRELESS PROGRAMMING (OPTIONAL)

Optionally, instead of using the wires to program this light, it can be done using most Android based phones or tablets that have a flash. See the app store for a list of approved devices.

1. Download the application from the play store.
2. Select the desired options in the app.
3. Power up the light using two or more Enable lines and attach the GREEN wire to Ground.
4. Hold the android device's flash as close as possible to the sensor in the light (shown below).
5. Press send and the Android device's flash will flash for approximately 6 seconds.
6. If the programming was successful, the light will blink for about 1.5 seconds.

If it does not blink, there is an error:

- Ensure the flash of the phone is as close as possible to the location shown.
- Try blocking bright sunlight from the light.
- Try closing open apps on your device and or resetting it.



Sensor

White Visible

